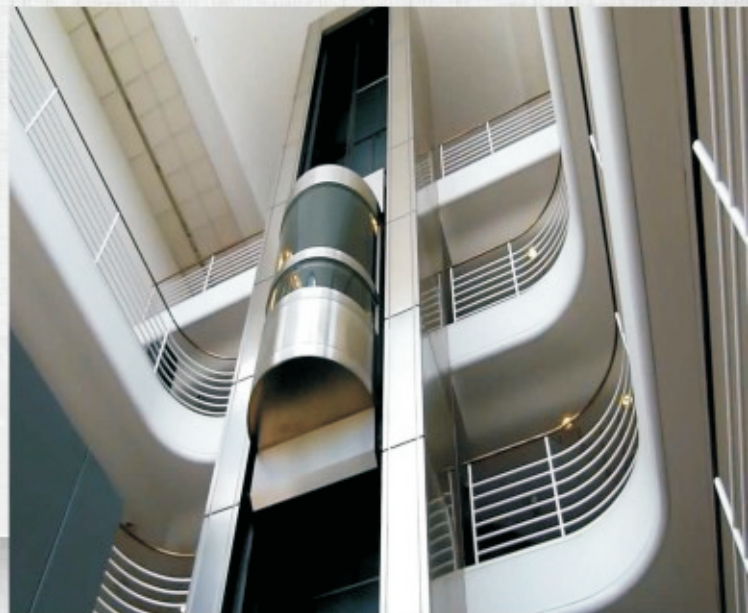


NEXGENTM ELEVATORS PVT. LTD.



ISO 9001 : 2008 COMPANY

About US

Nexgen Elevators is one of the upcoming company engaged into Installation, Modernization & Maintenance of Elevators and Car Parking System. We provide Passenger Elevators, Car Elevators, Capsule Elevators (Internal & External with Structure), Home Elevators, Service Elevators, Goods/Freight Elevators, Dumbwaiter Elevators, Stretcher/Hospital Elevators in Gearless, Traction and Hydraulic Systems. We also provide Car Parking Systems like Puzzle Parking, Tower Parking & Stack Parking.

Nexgen specializes in Customized Elevators as per the Client's requirement and Site feasibility. We have successfully installed a large number of Elevators at various Government & Private Organizations, Residential, Commercial establishments and Hospitals. We believe in constantly working hard to achieve the Benchmarks for Quality Services in our Products and Services.

Nexgen Maintains and Modernizes Elevators of wide range of brands. We have Computerized Complaint Registration & Tracking System. We believe in providing prompt After Sales Services and Maintenance services.

Nexgen Elevators is a company having blend of professionals and technocrats. We have highly trained and competent teams of Technicians and Engineers who constantly strive to fulfill the changing needs of our customers. We believe in continuous learning, up-gradation, innovation and perfection. We value your relationship with us and assure you our best services at all times.

Product Range

Elevators

- 1) Passenger Elevators
- 2) Car / Automobile Elevators
- 3) Capsule Elevators
- 4) Home Elevators
- 5) Hydraulic Elevators
- 6) Dumbwaiter Elevators
- 7) Stretcher /Hospital Elevators
- 8) Goods /Freight Elevators

Car Parking System

- 1) Stack Parking
- 2) Puzzle Parking
- 3) Tower Parking

CABIN DESIGNS

Glass Cabin



SS Designer Cabin



SS Hair Line Design Cabin



MS Cabin



False Ceiling



Cabin Handrails



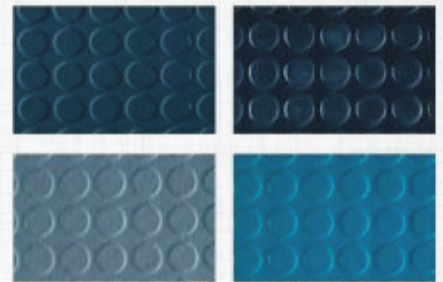
Vinyl Flooring



Wooden Flooring



Embossed Vinyl Flooring



Landing & Car Operating Panel



Swing and Telescopic Door



Imperforated Door



Collapsible Door



Full Glass Door



Framed Glass Door



SS Door



MS Door



Horizontal Opening Door

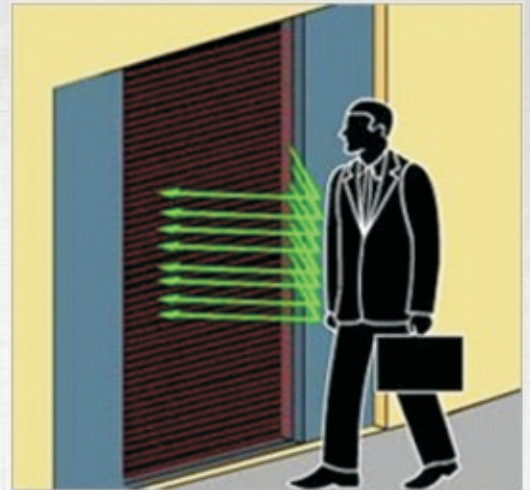


Vertical Opening Door



Infra Red Door Detector

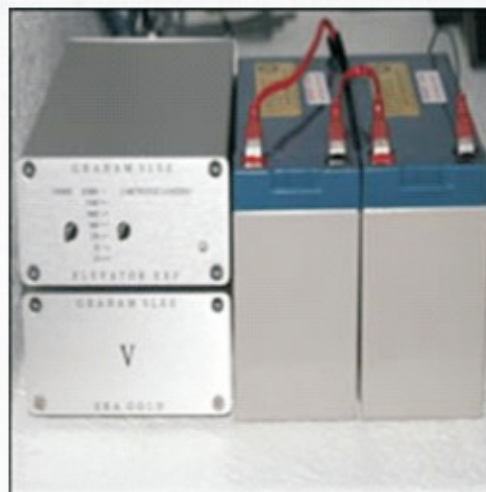
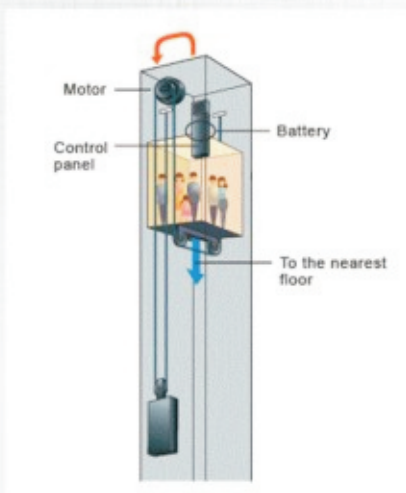
Infra red door detector projects direct beams to detect person or object in the path of the closing door. It re-opens the closing door on detecting the obstruction and restarts the closing of the door after the preset time lag. This system is highly reliable and easy to install. It is unaffected by alignment and door movement.



Overload Sensors

Overload Sensors can be installed in any elevator to indicate the loading condition and provide a trip signal to the control circuit when lift cabin is overloaded. This also prevents deterioration of brakes. Installation is very easy and requires no dismantling of the lift assembly.

Automatic Rescue Device (ARD)



The Automatic Rescue Device (ARD) is an Advance Rescue System used for rescuing the passengers from elevators in the event of power failure. Manual rescuing is time consuming and prone to high anxiety amongst the passenger. Attempt to manual rescue may also lead to injuries if done by untrained person. ARD with the help of battery power drives the elevator to the nearest landing floor and opens the door automatically to rescue the passenger. The elevator controller detects the nearest floor position to drive the elevator movement direction.

Gearless Machine

The gearless machine, which is powered by a Permanent Magnet Synchronous Motor (PMSM), represents the state of art in elevator technology - especially for the Machine Roomless (MRL) segment. We use precision made High Torque Permanent Magnet Synchronous Motor gearless traction machines. These Machines are highly efficient and consumes less Power as compared to Geared machines.

As there is no reduction gearbox, the machine ensures high efficiency. These machines are sealed for lifetime and do not require Oil Change. These machines also provide a smooth ride for the passengers as there is low noise and vibrations as compared to a Geared machine. Most of the time the gearless machine is fitted with 2:1 roping which reduces the Kilowatt rating of the Machine required for carrying certain amount of load resulting in better efficiency. These Machines save upto 30% of power as compared to geared Machine. This Machine can be used for Machine Roomless applications.

These Machines are used for low as well as for high speed application. All high-rise, high speed elevators use gearless machines.



Geared Traction Machines

Geared traction machines are driven by AC 3-phase electric motors. Geared machines use 'Worm Shaft Gears' to control mechanical movement of elevator cars by "rolling" steel hoist ropes over a drive sheave which is attached to a gearbox driven by a high speed motor. These machines are generally the best option for basement or overhead traction use for speeds up to 500 ft/min (2.5 m/s).



Hydraulic Kit & Layout

All the Hydraulic Units we use are imported from Italy. This Assures world class quality and reliability. The Hydraulic Unit Consumes power only during the up direction travel of the Elevator. During its travel in the down direction, the elevator consumes almost no Power. The Hydraulic units can be suited for various applications including Home Lifts, Passenger Lifts, Car Lifts or Goods Lifts. Hydraulic units can be used for single phase as well as for three phase power supply. Single Phase Hydraulic units are used for Home lift applications.

All Hydraulic units provided by us have manual lowering feature as well as manual raising feature. These features help to rescue passengers in case of power failure.



Stack Parking



Multi Level Parking



Tower Parking



Car Turning Table



Puzzle Parking



NEXGENTM
ELEVATORS PVT. LTD.

Nexgen Elevators Private Limited

Add.: 9, Sompuri Market, Station Road,
Santacruz West, Mumbai - 400 054, INDIA.

Phone : +91-22-64502111 • Mobile : +91-9322753486

Email : mail@nexgenelevators.com / ashutosh@nexgenelevators.com

Website : www.nexgenelevators.com